

FIGURES

Mapping Ethnicity: Color Use in Depicting Ethnic Distribution
Jenny Marie Johnson

Henry Reed's Poetic Map of Verona: (Di)Versifying the Teaching of
Geography, IV
Adele J. Haft



Figure 1. Völkerkarte von Europa

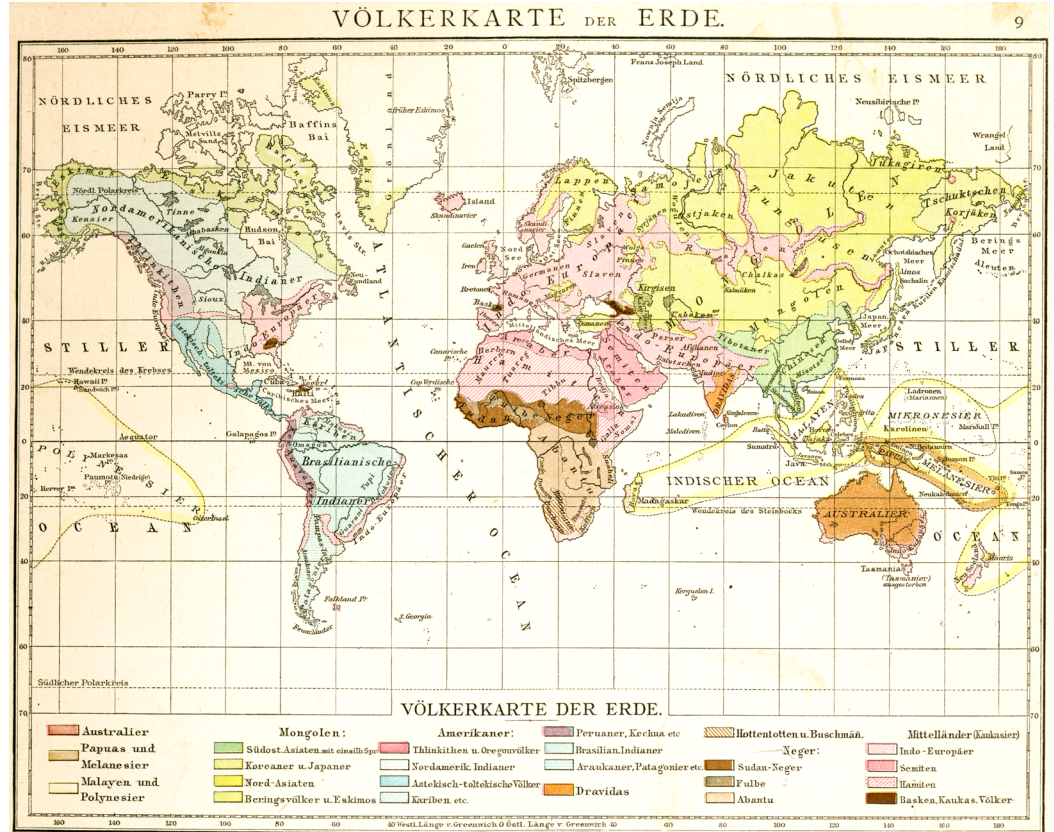


Figure 2. Völkerkarte der Erde

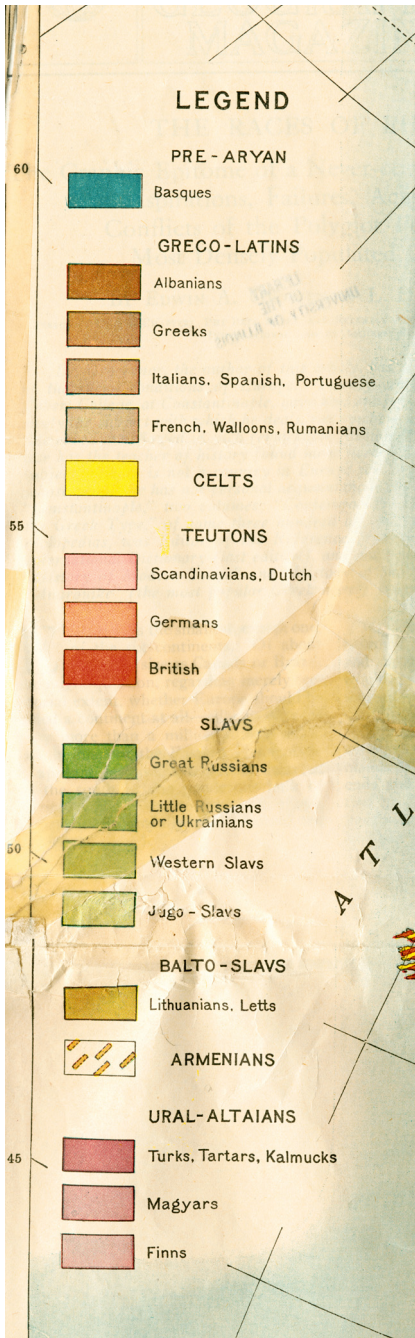


Figure 3. Map of the Races of Europe and Adjoining Portions of Asia and Africa, Legend



Figure 4. Map of the Races of Europe and Adjoining Portions of Asia and Africa, Basques



Figure 5. Map of the Races of Europe and Adjoining Portions of Asia and Africa, Fiume



Figure 6. Volkstumskart von Jugoslawien



Figure 7. Volkstumskart von Slowakei, legend

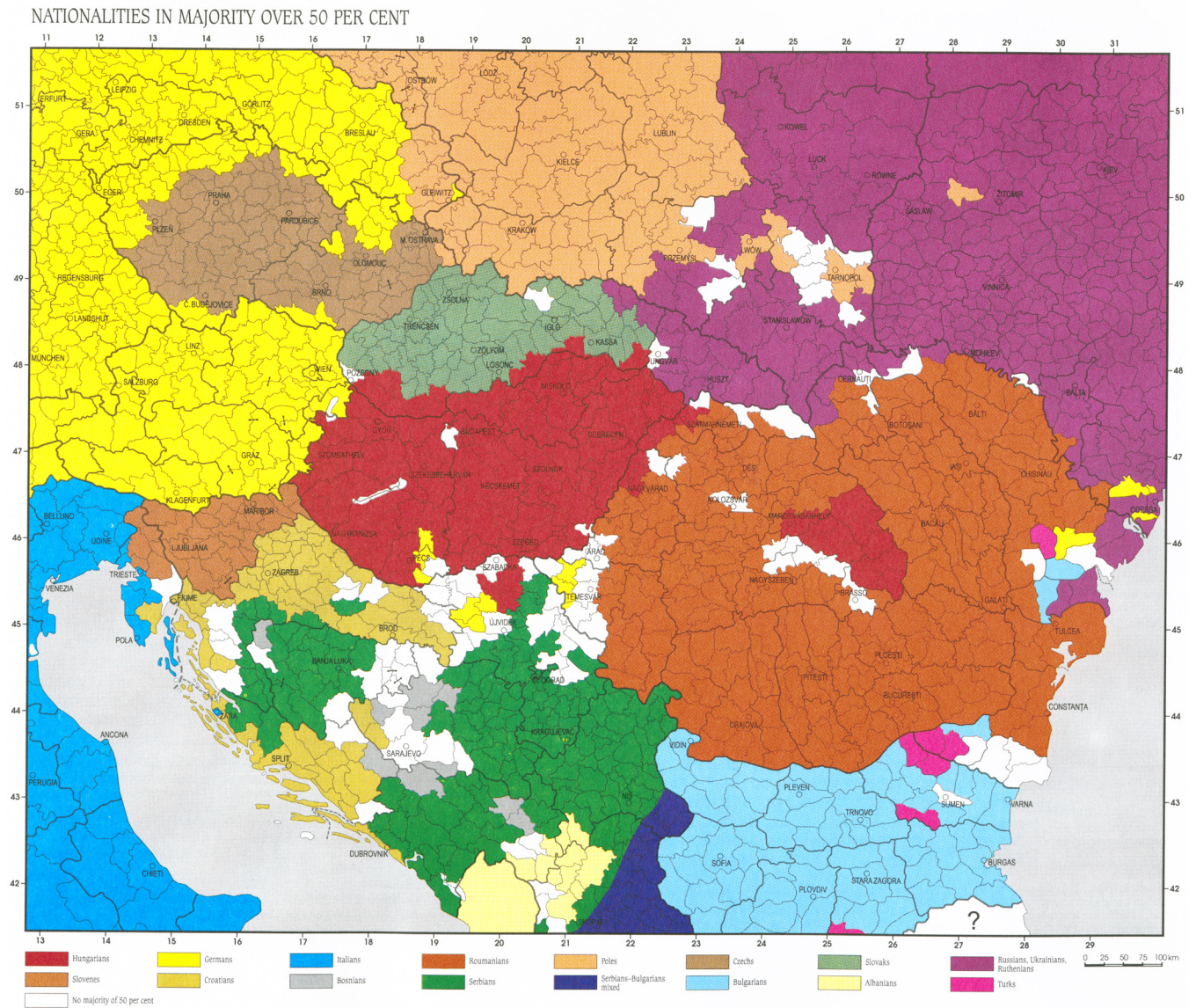


Figure 8. Nationalities in Majority over 50 percent

- English
- Irish
- French Canadian and French
- Italian
- Portuguese
- Polish
- Russian
- German
- Spanish-speaking
- African American
- Native American

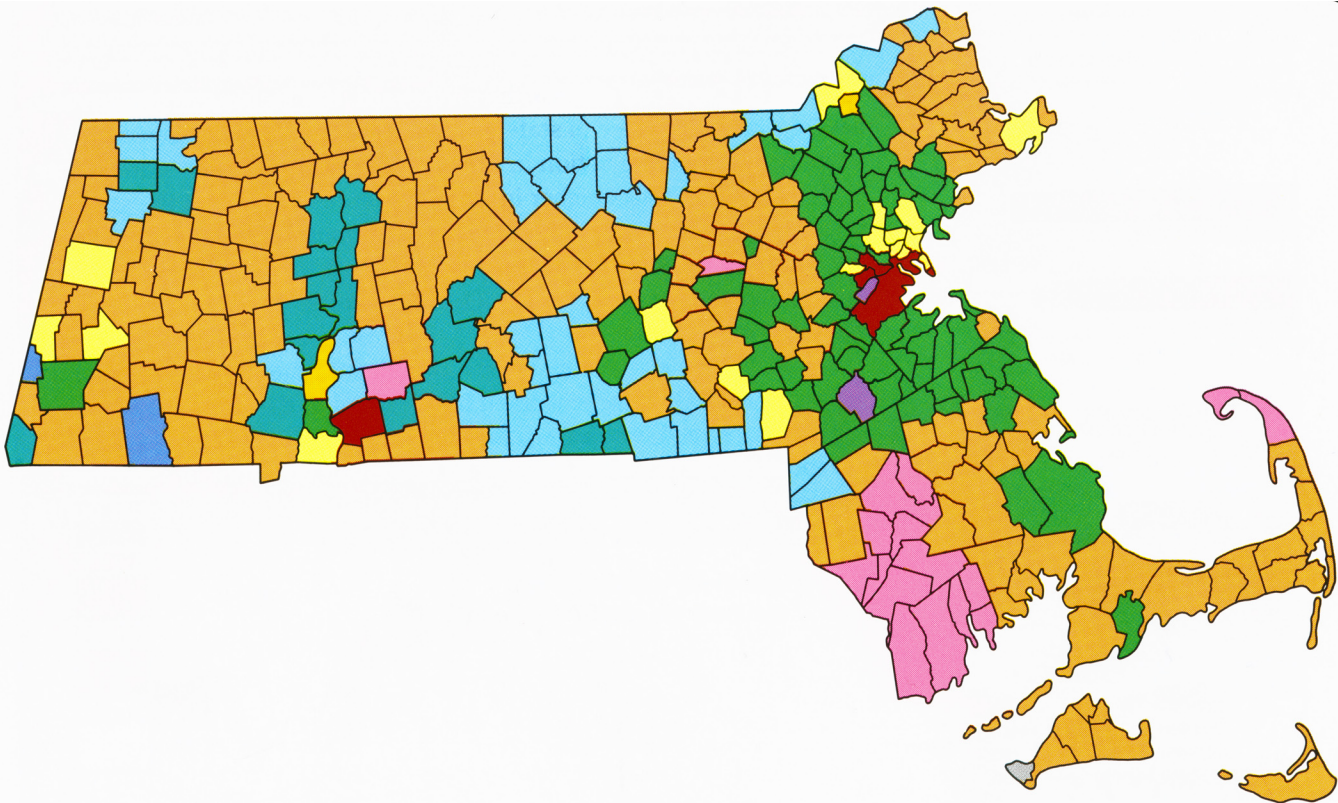


Figure 9. Dominant Ethnic Groups

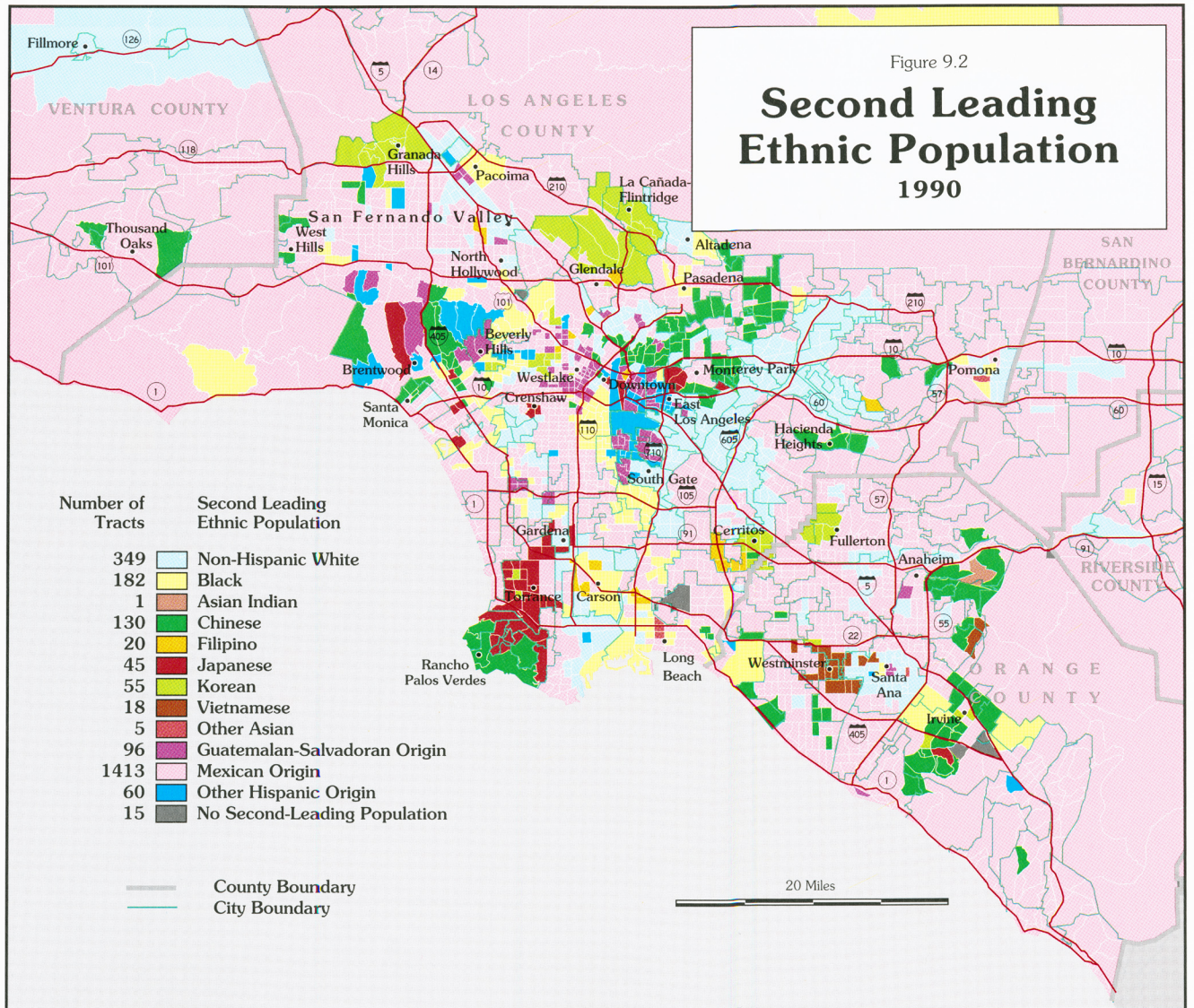


Figure 10. Second Leading Ethnic Population, 1990

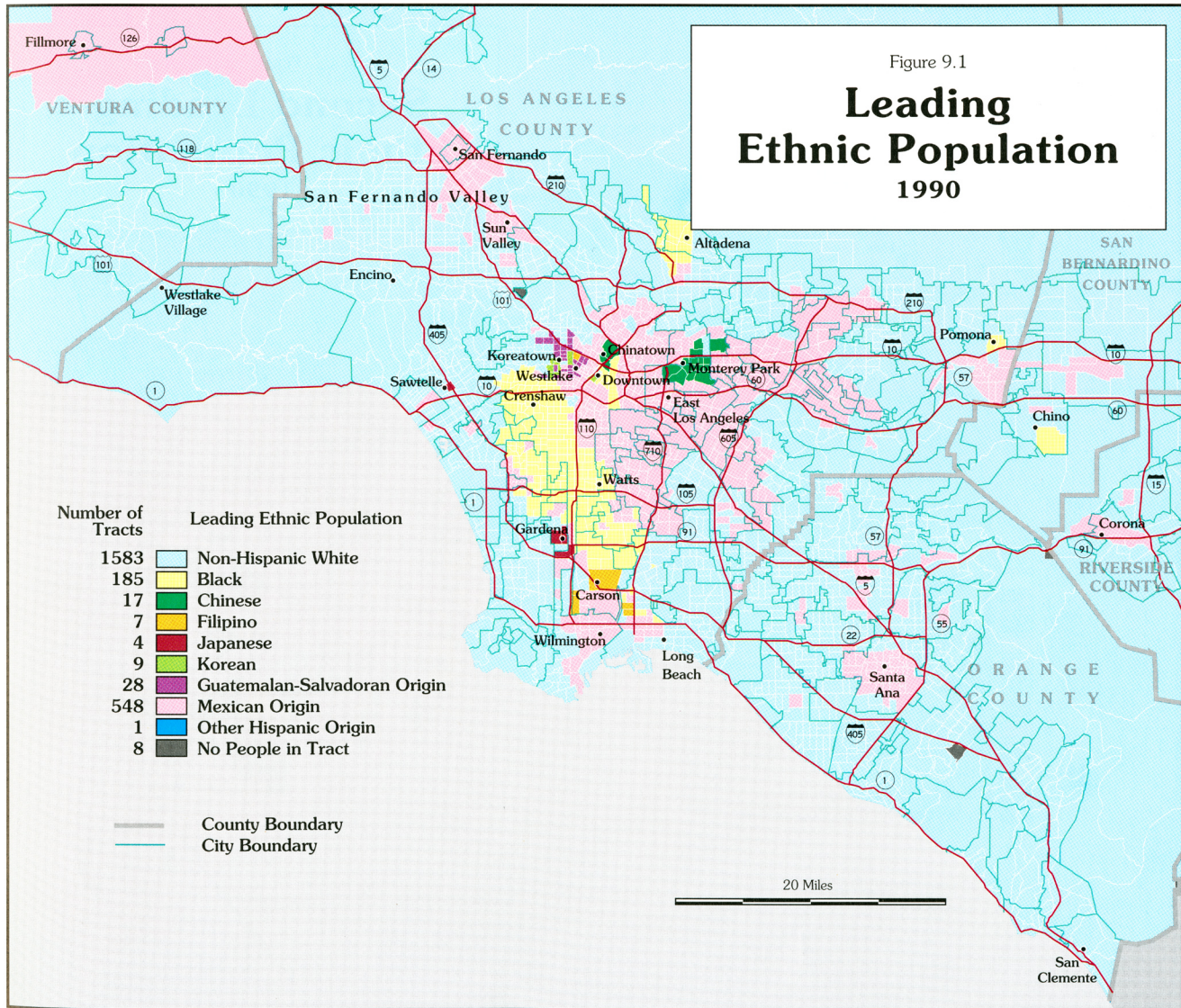


Figure 11. Leading Ethnic Population, 1990

C: Minorities 1991

second largest ward populations

see page 62

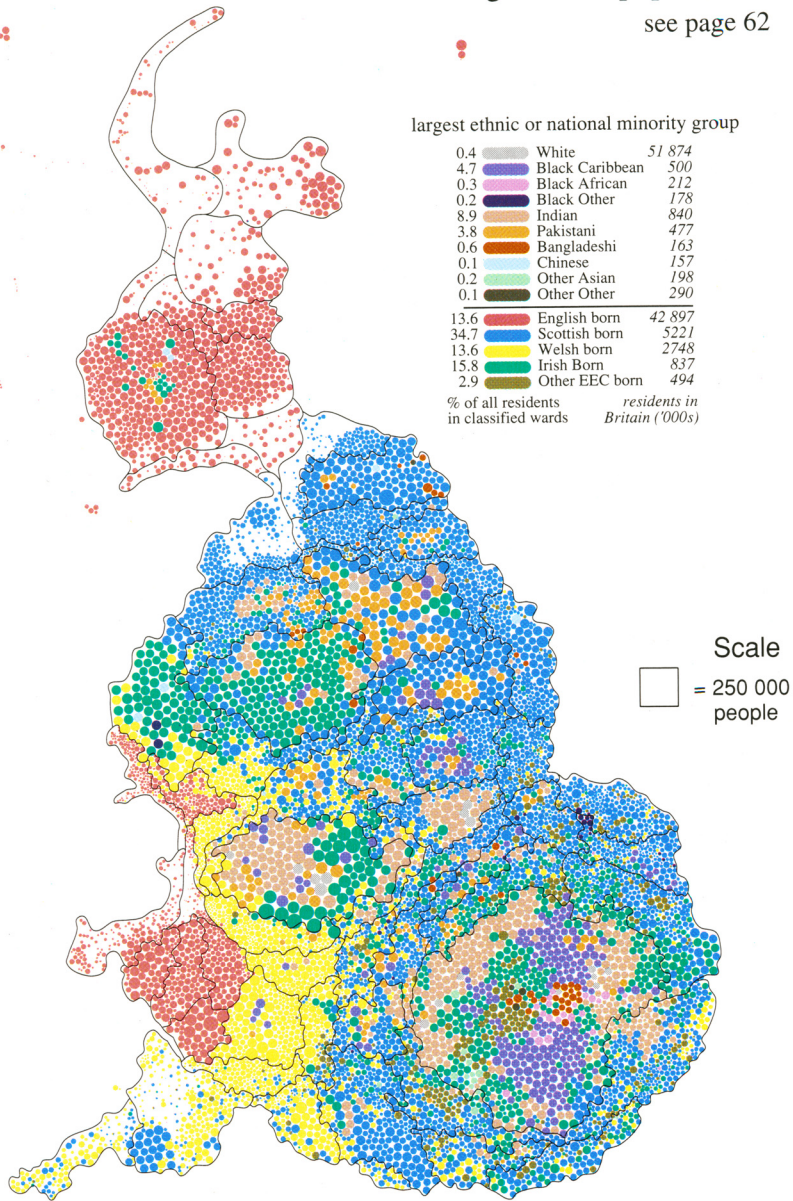


Figure 12. Minorities, 1991

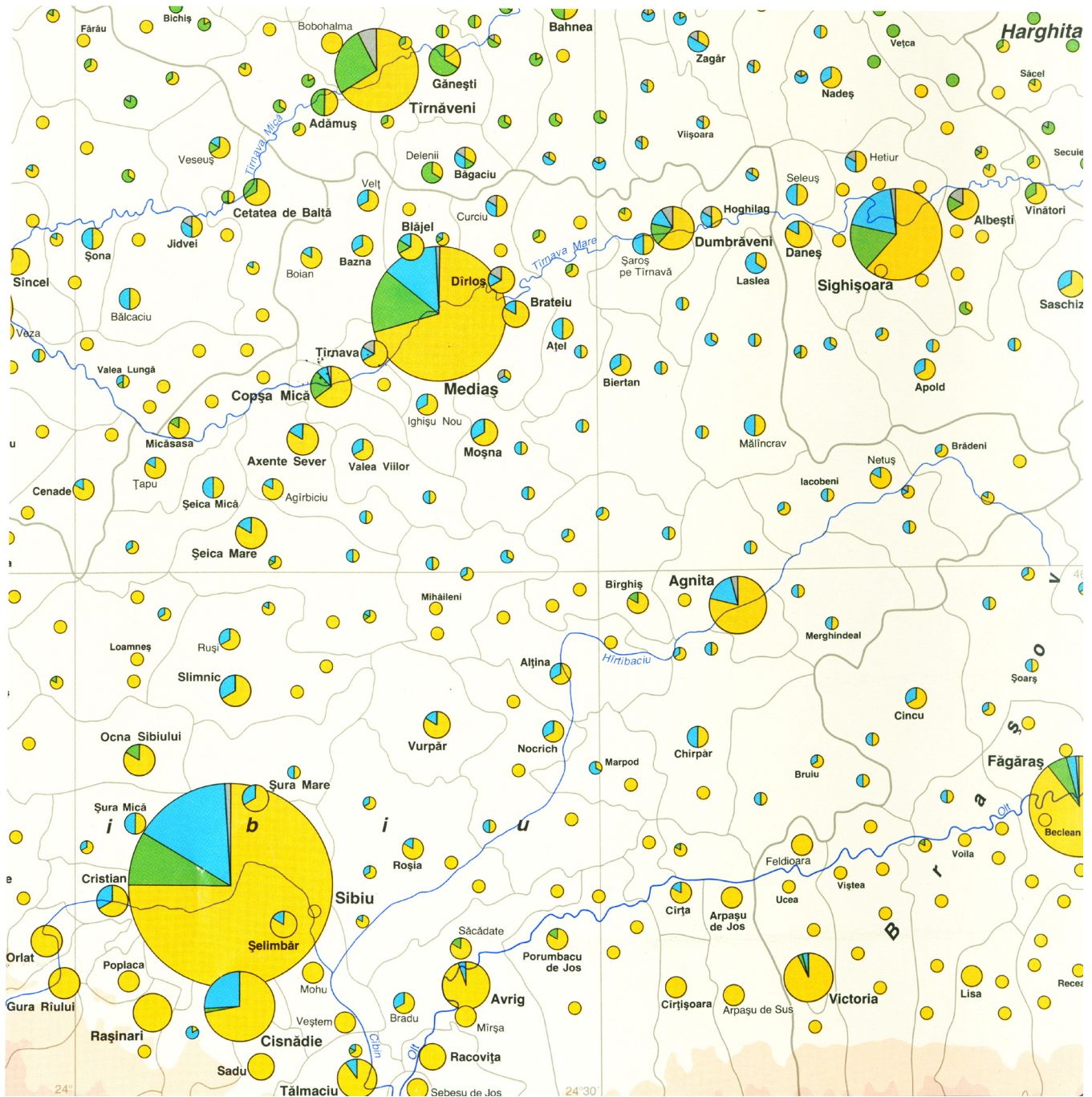


Figure 13. Sprachenverteilung in Siebenbürgen

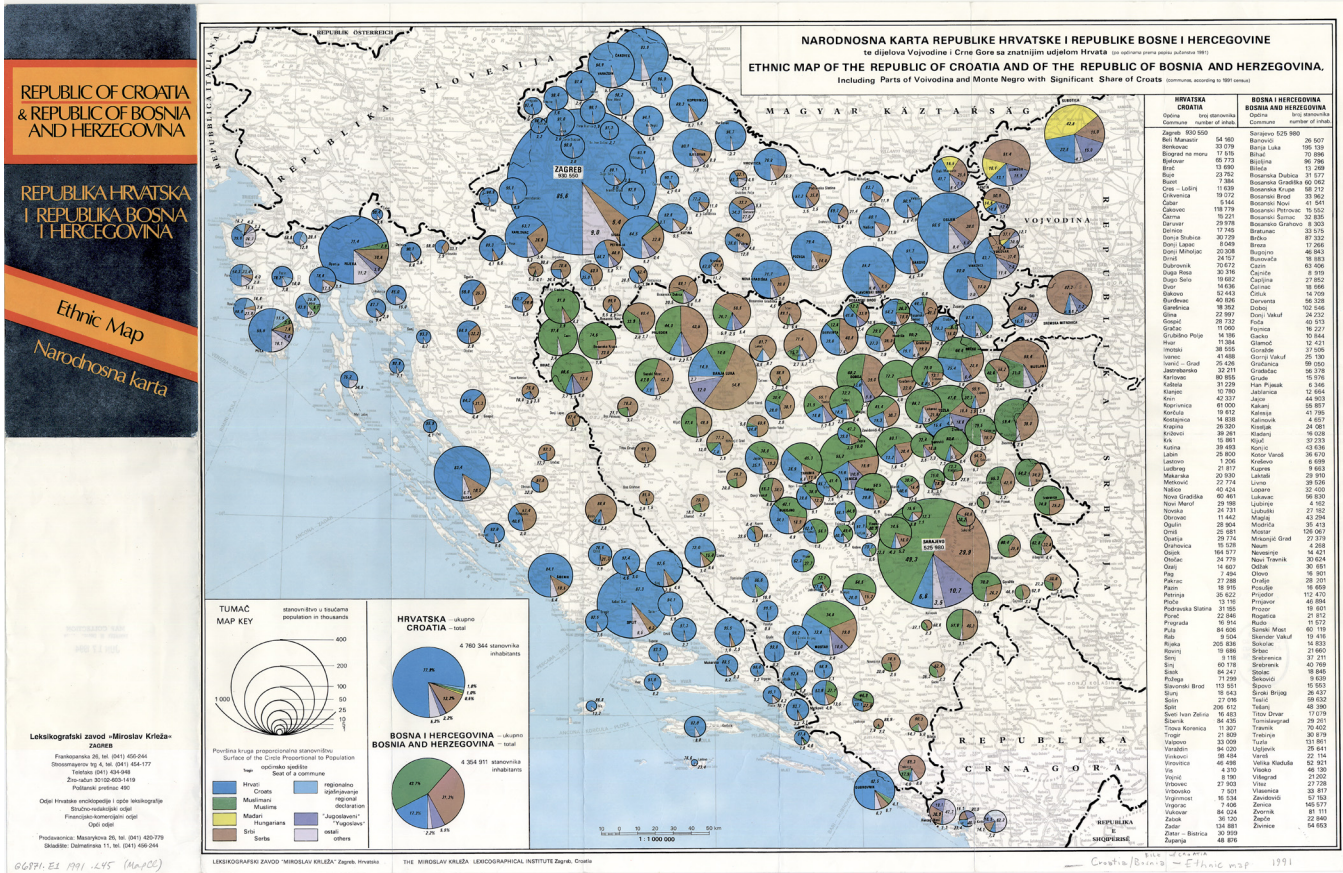


Figure 14. Ethnic Map of the Republic of Croatia and of the Republic of Bosnia and Herzegovina

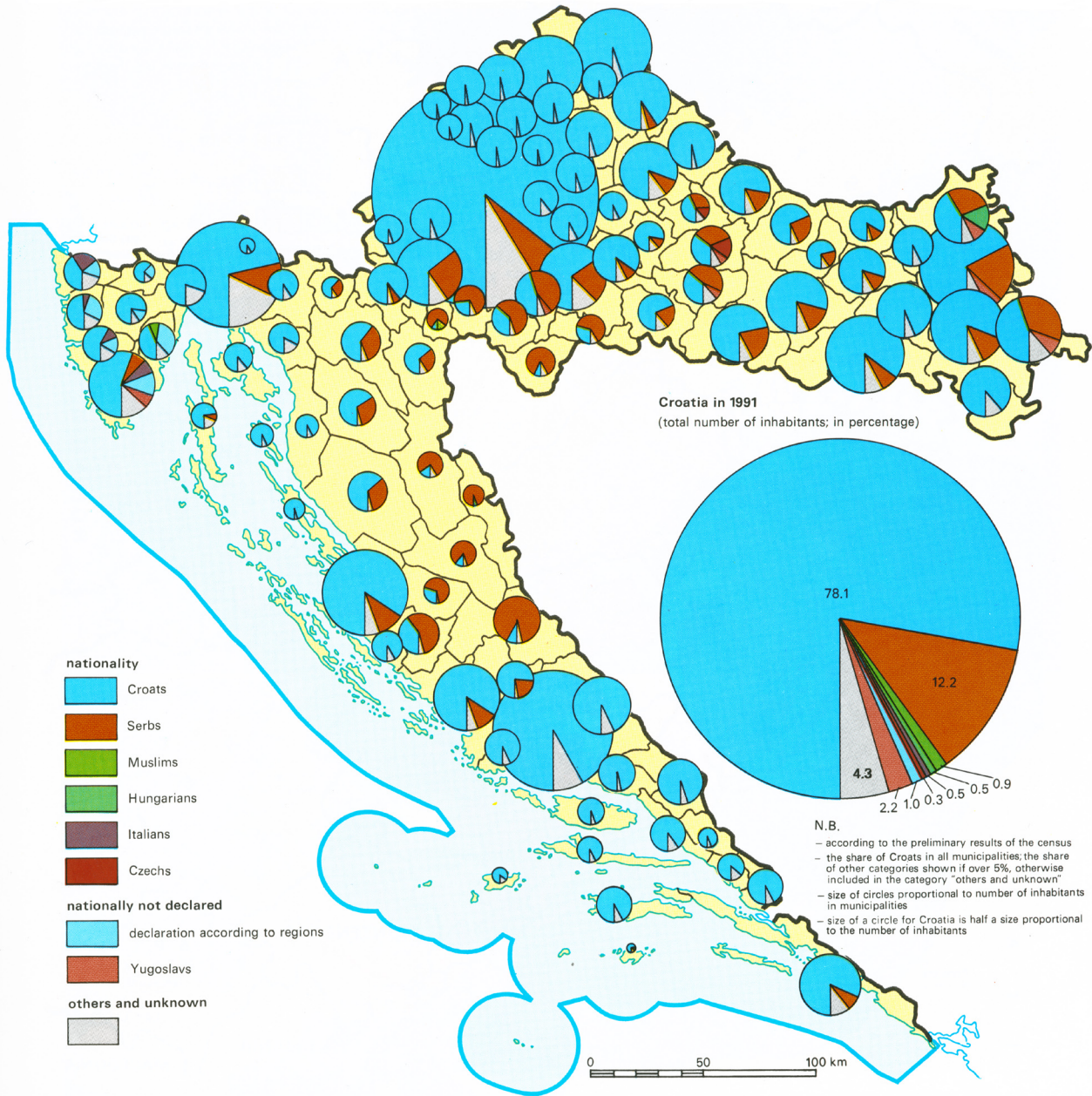


Figure 15. Population according to Nationality in 1991

4 Berlin
Anzahl, Anteil und Herkunftsländer der Ausländer 1998
 nach Stadtbezirken und statistischen Gebieten

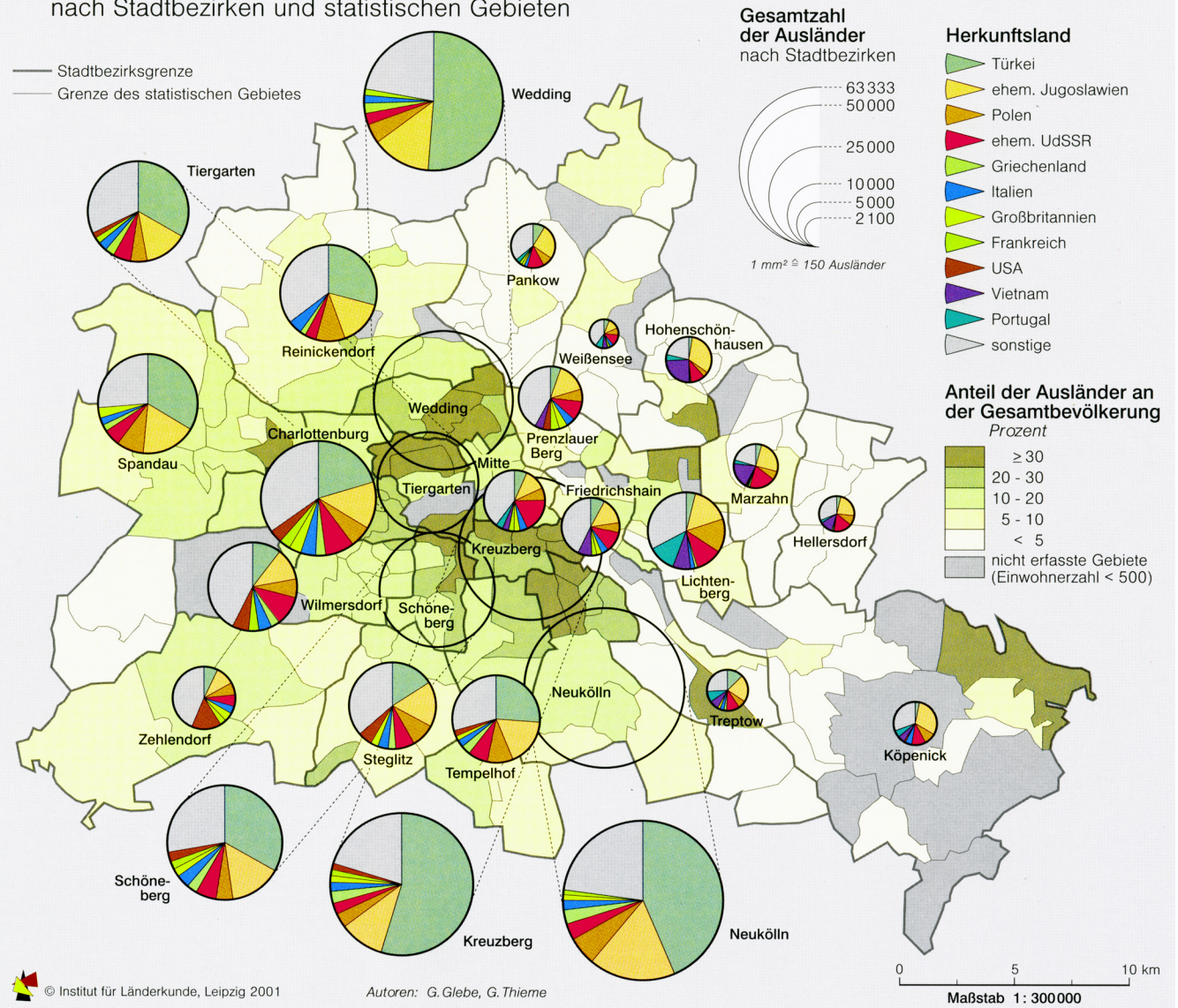


Figure 16. Berlin, Anzahl, Anteil und Herkunftsländer der Ausländer 1998

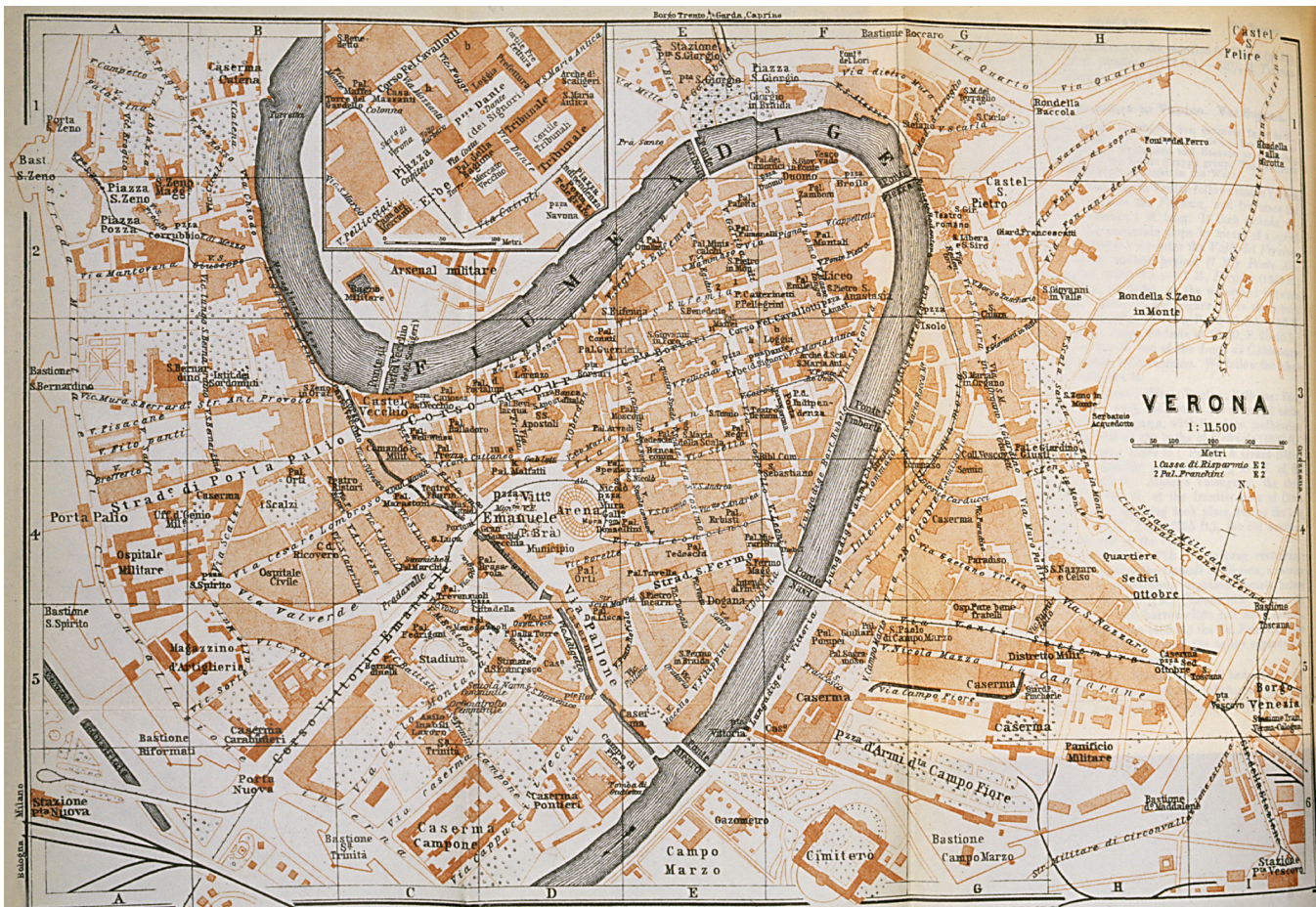


Figure 1. Fold-out map of Verona. From Karl Baedeker, *Italy from the Alps to Naples: Abridged Handbook for Travellers*, Leipzig: Karl Baedeker, 1928, opposite 73. Produced by the cartographic firm of Wagner and Debes, Leipzig. Scale, 1:11,500. Lithographed and colored map, 10 1/2" W x 7 1/8" H on a sheet 11 1/4" x 7 3/4". General Research Division of the New York Public Library—Astor, Lenox and Tilden Foundations. Courtesy of Karl Baedeker Verlag.



Figure 2. Fold-out map of Verona. From Luigi Vittorio Bertarelli, *Northern Italy: from the Alps to Rome*, edited by Findlay Muirhead, *The Blue Guides*, London: Macmillan and Co.; Paris: Librairie Hachette, 1924, opposite 160. UFF. Cartogr. Del T.C.I. [Touring Club Italiano]; chief cartographer, P. Corbellini. Scale, 1:11,000. Lithographed and colored map, 13 1/2" x 9" on a sheet 13 3/4" x 9 1/2". General Research Division of the New York Public Library—Astor, Lenox and Tilden Foundations.



Figure 3. Brochure Map of Verona. Printed by Richter and Company, Naples, for Hotel Milano, Verona, 1936. Lithographed and colored map, 7 1/4" x 6 1/4" on a sheet 11 3/4" x 8 1/2". The brochure was acquired by the New York Public Library's Map Division on 8 March 1944. This side contains views in the margins; at the bottom, a numbered list of monuments indicates their location on the map. The reverse side contains a simpler map showing Verona's proximity to Lake Garda. The Map Division of The New York Public Library—Astor, Lenox and Tilden Foundations.



Figure 4. Map of Verona. From Georg Braun, Franz Hogenberg, and Simon Novellanus [van den Neuvel], *Civitates Orbis Terrarum, Liber Primu [-Tertius]*, Cologne: Gottfried von Kempen, 1581-82, Book 3, Plate 49. Engraved on copper, 18 5/8" x 14 1/4". The profile view on top, entitled "Magnifica Illa Civitas Verona," measures 18 1/2" x 6 7/8"; the lower plan-view, 18 1/2" x 7 3/8". Rare Books Division of the New York Public Library—Astor, Lenox and Tilden Foundations.



Figure 5. "Verona Venetiae Civitas." From *Jacobus Philippus (Foresti), Bergomensis, Supplementum Supplementi Chronicarum*, Venice: Georgius de Rusconibus, 1513, Book 6, 90 (recto); see also Book 14, 167 (verso). Incunabula view, 4 1/2" x 3 1/2". This woodcut is identical to that representing Damascus in Book 3, 16 (recto). Rare Books Division of the New York Public Library—Astor, Lenox and Tilden Foundations.

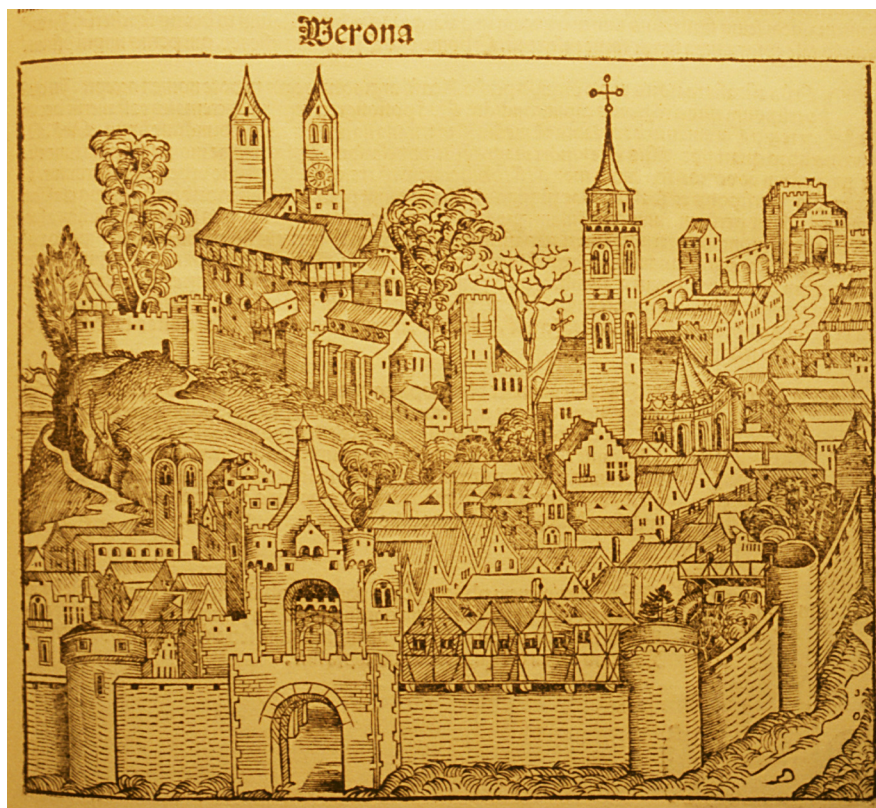


Figure 6. "Verona." From *Hartmann Schedel, Das Buch der Chroniken*, Nuremberg: A. Koberger, 1493, LXVIII and CCXXXVII (recto). Incunabula view, 8 3/4" x 7 1/2". The same woodcut is used for Damascus (XXIII, verso), Naples (XLII, recto), and eight other cities and countries, including Spain (CCLXXXVIII, verso). Rare Books Division of the New York Public Library—Astor, Lenox and Tilden Foundations.



Figure 7. "Verona." From Joan Blaeu, *Nieuw vermeerderd en verbeterd groot stedeboek van geheel Italie* ["Town Books of Italy"], The Hague: R.C. Alberts, 1724, vol.1, Plate XXX. Engraved on copper, 20 1/4" x 16 1/4". Verona's amphitheater appears on Plate XXXI. The Map Division of The New York Public Library—Astor, Lenox and Tilden Foundations.



Figure 8. "Verona in der Lombardey." From Daniel Meisner, *Thesaurus Philopoliticus or Politisches Schatzkästlein*, Heidelberg: C. Winters, 1927, 1:375. This emblem-map is a reproduction of the one contained in the original edition, published at Frankfurt am Main, 1623-31. General Research Division of the New York Public Library—Astor, Lenox and Tilden Foundations.