

Cartographic Techniques: Raster data in multimedia atlases: benefits and challenges. Examples from the "Atlas of Switzerland – interactive"

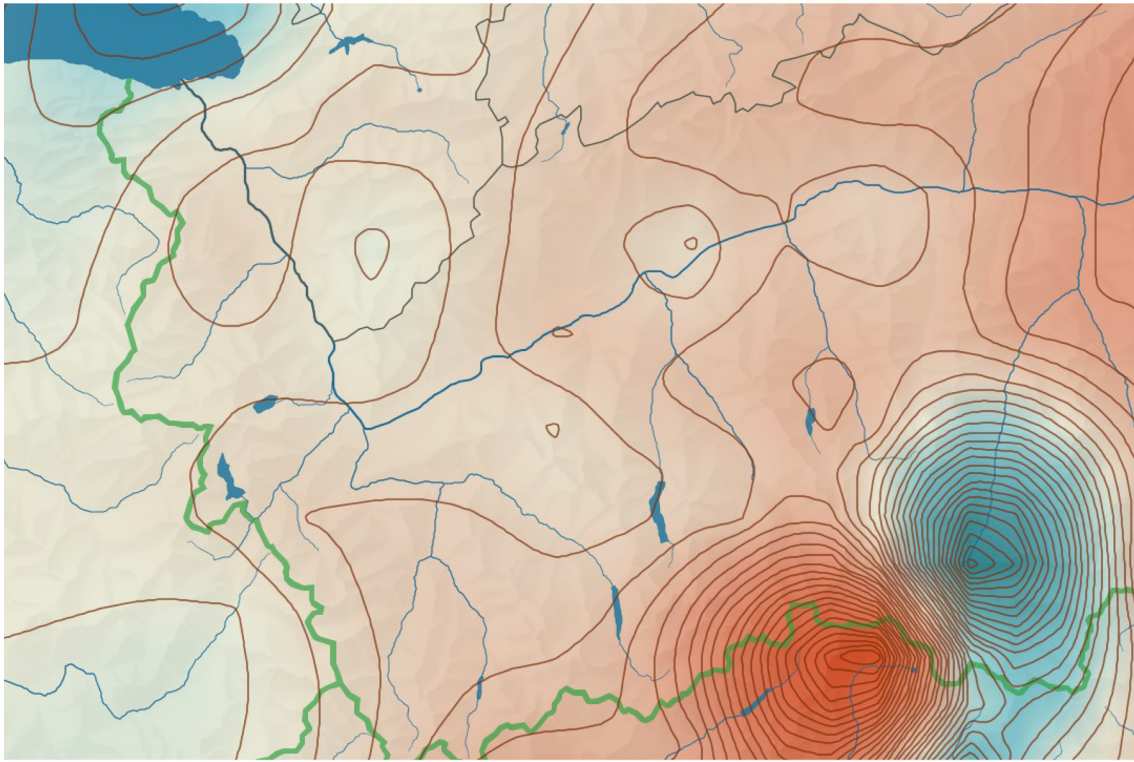


Figure 1. Mute Layer (isogonic contours overlying interpolated raster showing declination)

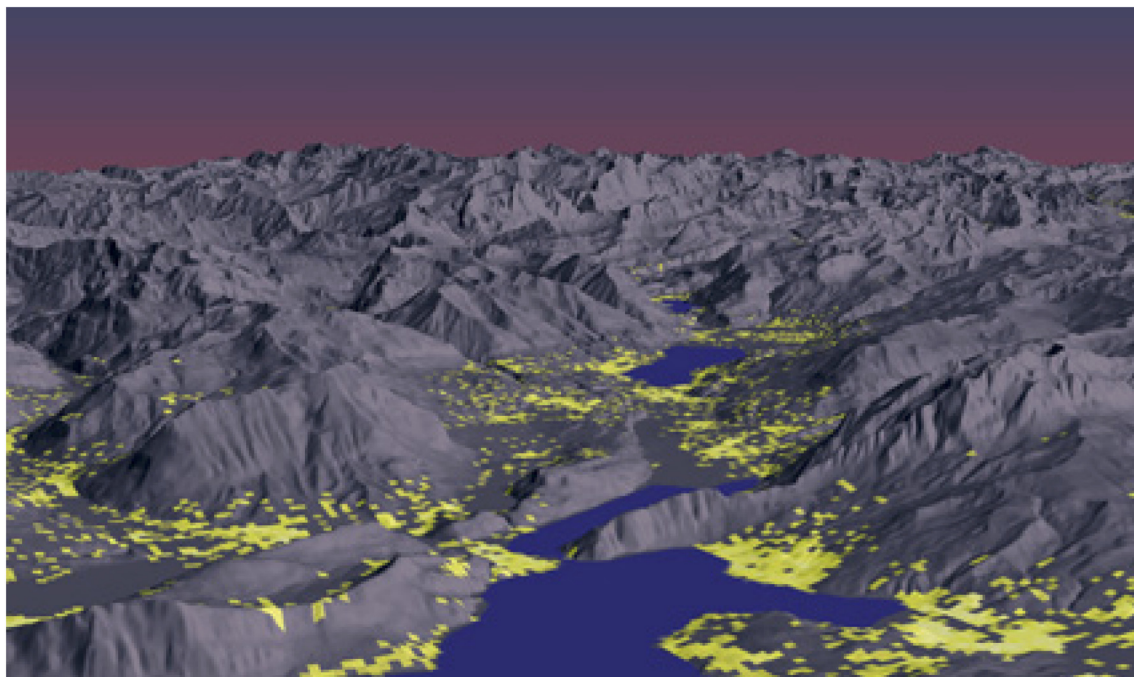


Figure 2. Panoramic view (interpolated raster showing distribution of population draped over a terrain model)

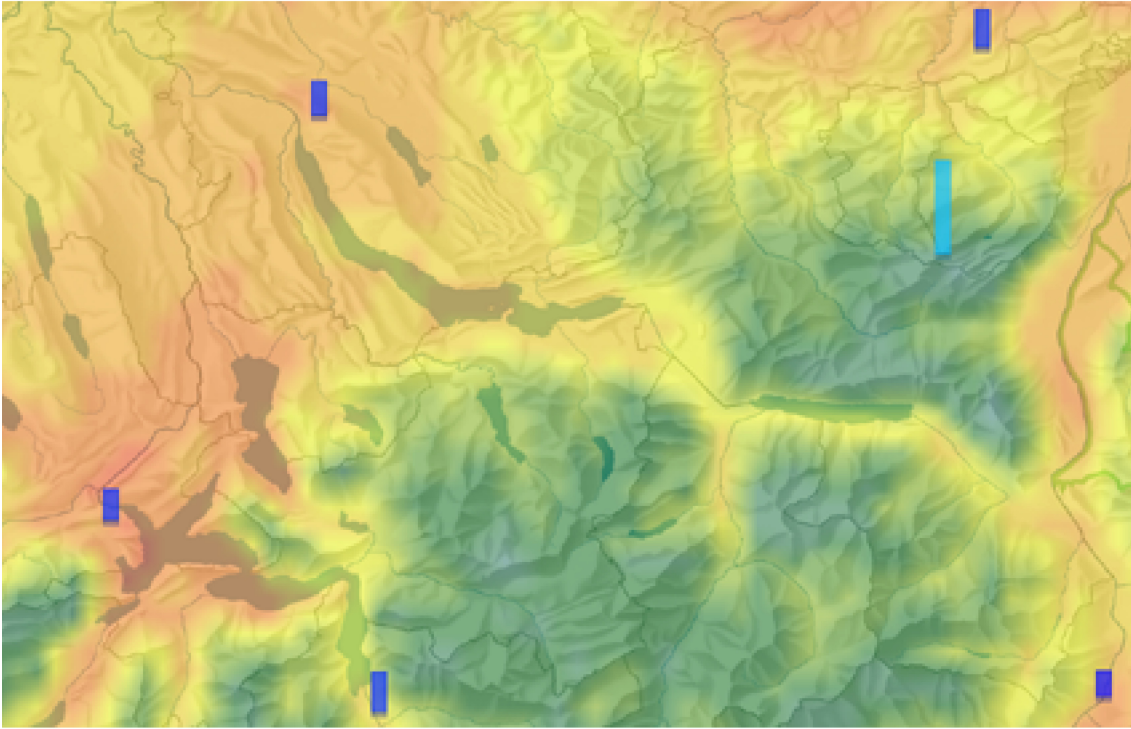


Figure 4. Example of vector data (gauging stations) integrated with raster data (precipitation) to produce contextually realistic, yet cartographic map.

The following individuals made donations to CP in 2003. NACIS gratefully acknowledges their support.

L.J. Andreas
Armando Boniche
Barbara Fine
Jim Fulmer
Erin Gold
John Hutchinson
Christina Johnson
Scott McEathron
Douglas Norgord
John Pound
Muriel Strickland
Edward Sullivan