

Cartography 2003



Figure 3. A public domain reference map of Azerbaijan. Source: CIA Factbook, 2003.

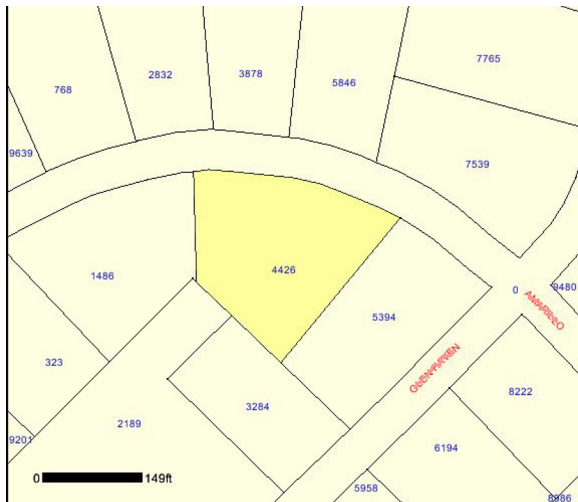


Figure 4. A property map on the web. Source: Cabarrus County, 2001.

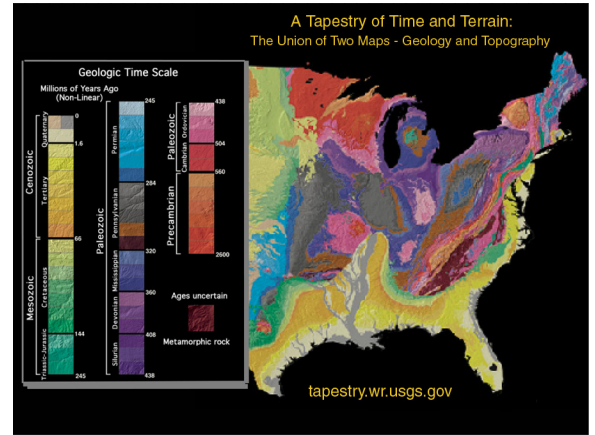


Figure 5. Excerpts from "A Tapestry of Time and Terrain." Image has been rearranged for this illustration. Source: Vigil et al., 2003.

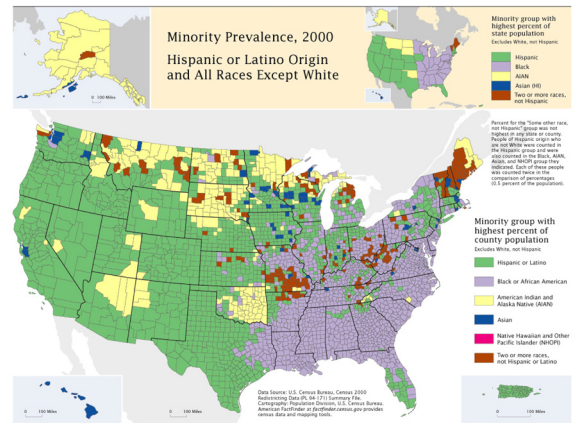


Figure 6. A map from Mapping Census 2000. Source: Brewer and Suchan, 2001.

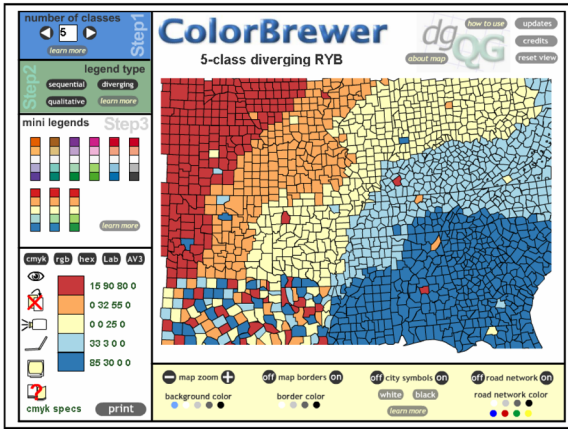


Figure 8. The layout of a Colorbrewer page. A diverging 5-class scheme is illustrated here. Source: Brewer, 2002. Used with permission.

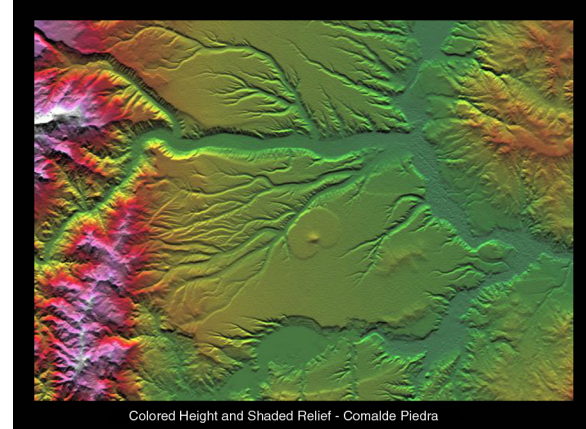


Figure 11. An image created from Shuttle Radar Topography Mission data. Source: JPL, 2003.

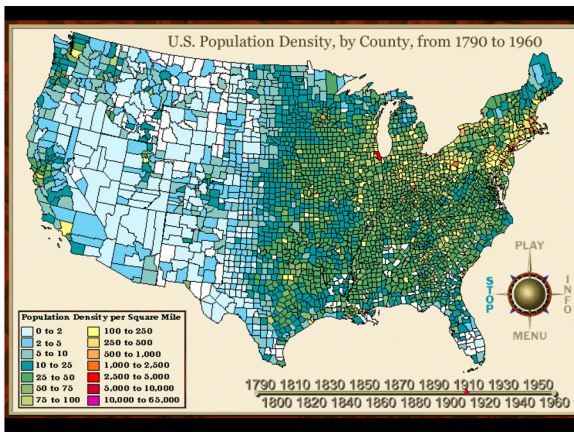


Figure 9. The 1910 population image in Jill Hallden Harsha's U.S. population animation. Used with permission.

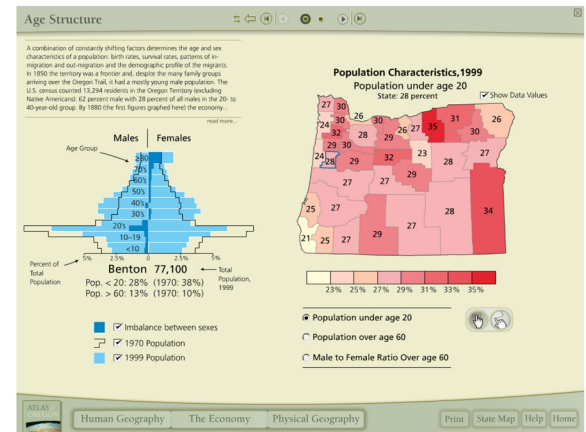


Figure 13. A screen capture of a page in the interactive Atlas of Oregon. Used with permission. Source: Atlas of Oregon CD-ROM, Copyright 2002, University of Oregon Press.

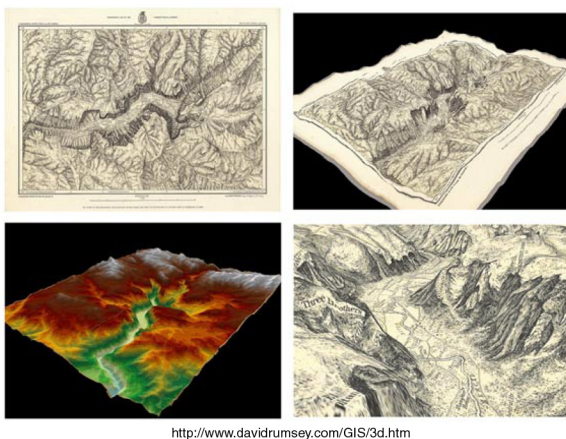


Figure 10. An historical map of Yosemite Valley, the current-day digital elevation model (DEM) of the same area, and the historical map draped over the DEM. The image in the lower right is a scene as one flies over the area. Source: Rumsey, 2003. Used with permission.