

visual fields

Cordillera Huayhuash, 1:50,000

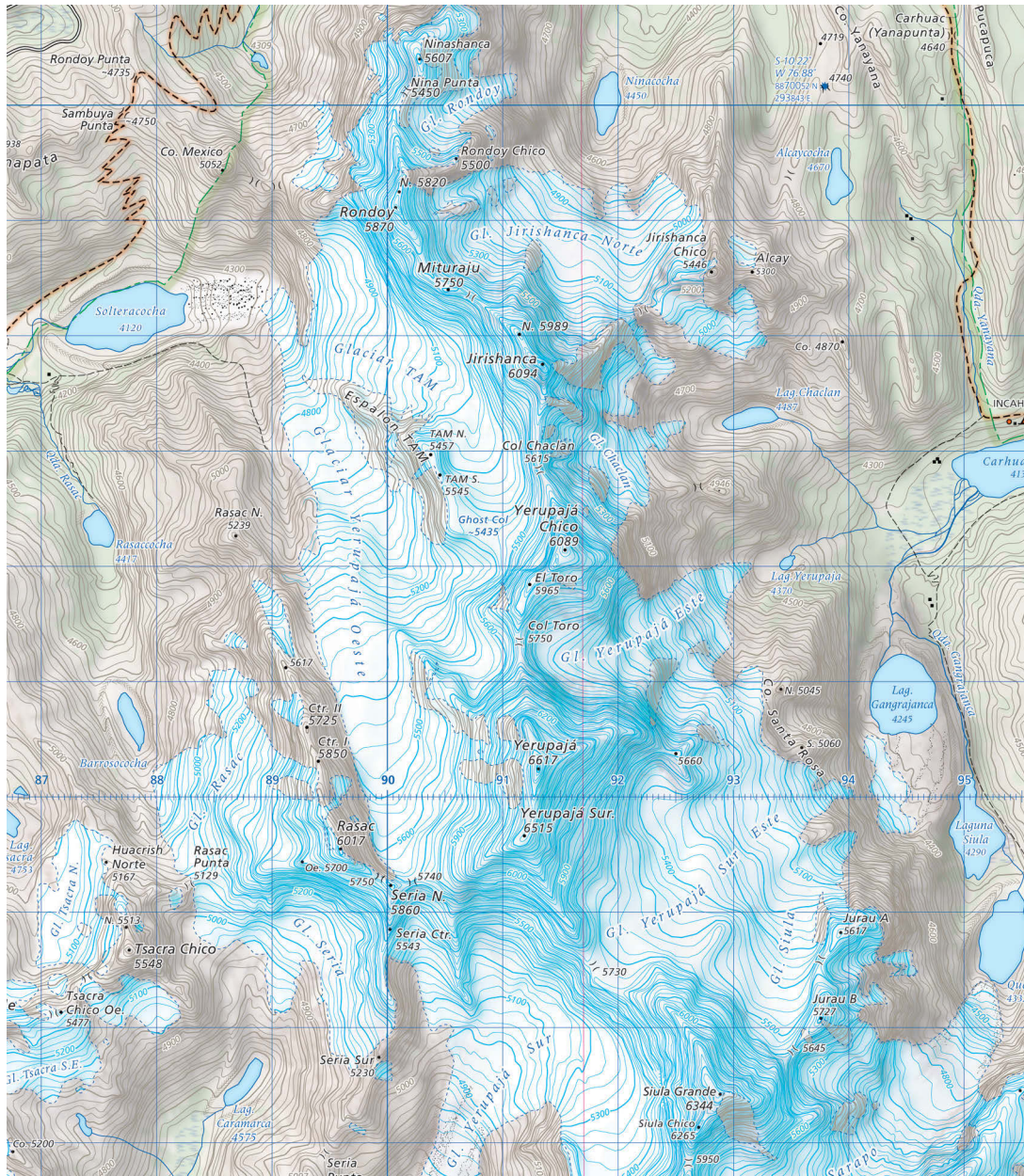
Designed by

Martin Gamache

Alpine Mapping Guild

alpinemappingguild@earthlink.net

59



Cordillera Huayhuash, 1:50,000

In 2002 we published the first incarnation of our Cordillera Huayhuash map at a scale of 1:65,000. Our initial data sources were Peruvian IGN 1:100,000 topographic maps and Landsat TM imagery. Although the map was well received by the user community, it was clear our dataset was not adequate for our goals. In the ensuing years we successfully obtained more recent 1:25,000 digital data from the Peruvian land tenure reform agency PETT. We compiled a new base map at a scale of 1:50,000 and generated a fairly detailed 25 meter DEM. 15m resolution ASTER satellite imagery from 2002 and 2003, and 1999 Landsat ETM+ was also obtained. The imagery was orthorectified using the DEM, mosaiced and classified to obtain landcover information and to delineate glaciated terrain. We used several image processing methods to create an aesthetically pleasing background

image incorporating shaded relief, terrain texture, trails and protected area boundaries. This image was created as CMY TIFF. Additional vector line work overprinted the image in black, cyan and two spot colors. Extensive fieldwork, user and local expert interviews were conducted during the 2002, 2003, and 2004 Peruvian trekking seasons. The new map was printed in Lima in August 2004. Inspiration for this map was found in the cartographic work of the Swiss Foundation for Alpine Research, the expedition maps of the German and Austrian Alpine Clubs, and the hiking maps of Pat Dunlavey.

For more information contact: Martin Gamache/Alpine Mapping Guild (alpinemappingguild@earthlink.net)