

*Color Figures***Introducing Plan Oblique Relief**  
*Bernhard Jenny and Tom Patterson*

Figure 1. Southeastern Oahu, Hawaii, rendered as conventional shaded relief (left), plan oblique relief (center), and as a 3D perspective view (right).



Figure 2. Xaver Imfeld's "Reliefkarte der Centralschweiz."



Figure 3. A sample from Erwin Raisz's 1957 "Landforms of the United States" (left) and Heinrich Berann's 1968 "Atlantic Ocean Floor," published by National Geographic Society (right). Note that Raisz uses lower left illumination and Berann lower right illumination.

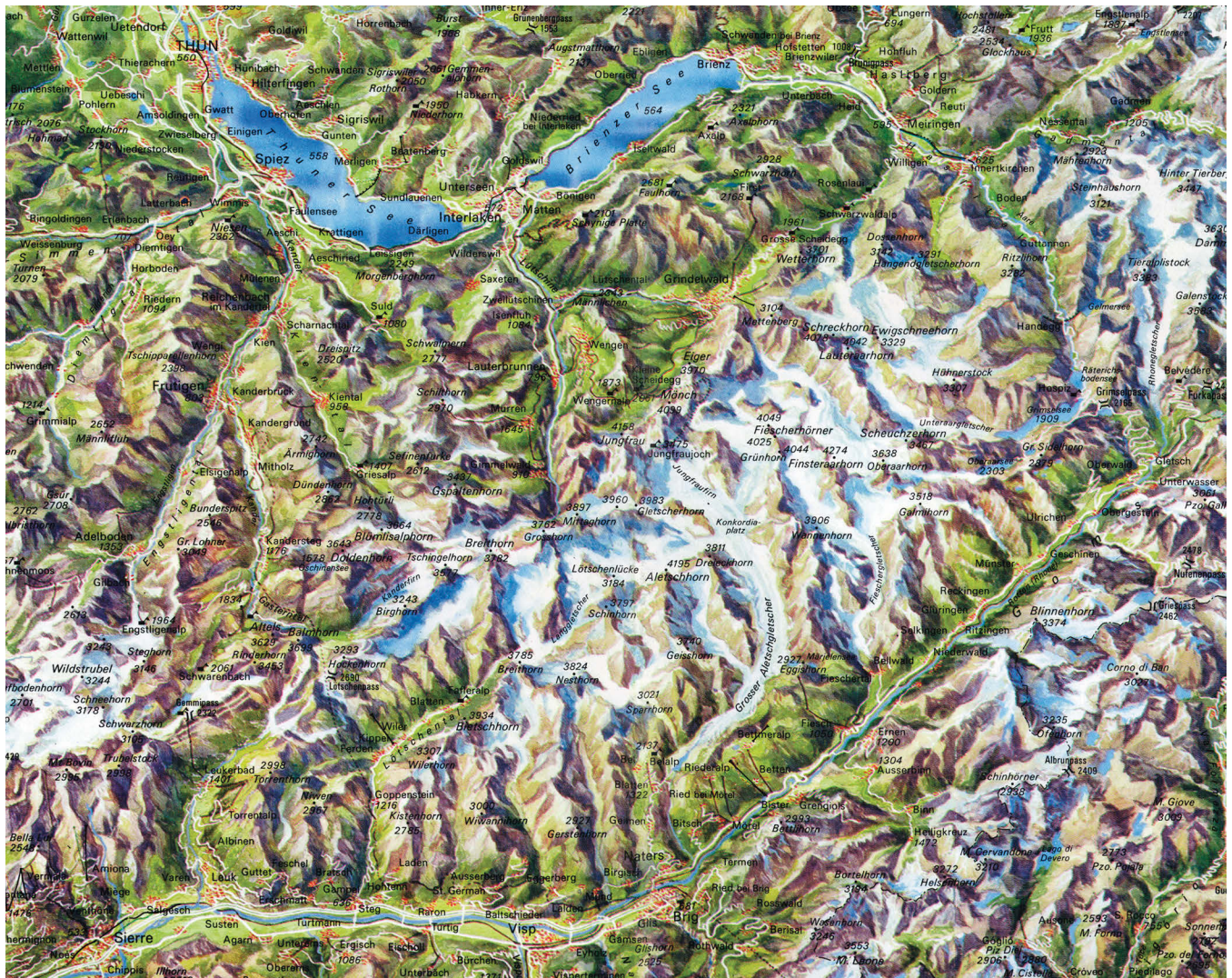


Figure 4. "A Bird's Eye View of Switzerland" by Bruno Kersten.

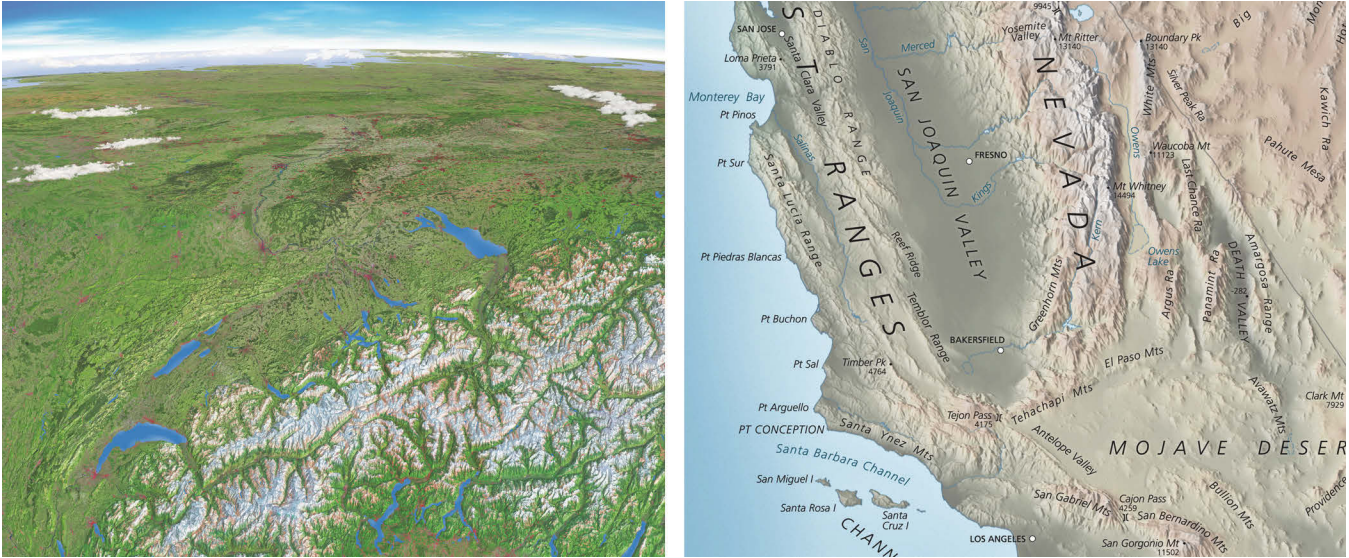


Figure 10. Panorama of Switzerland looking north (left) and an excerpt from the “Physical Map of the Coterminous United States” (right).

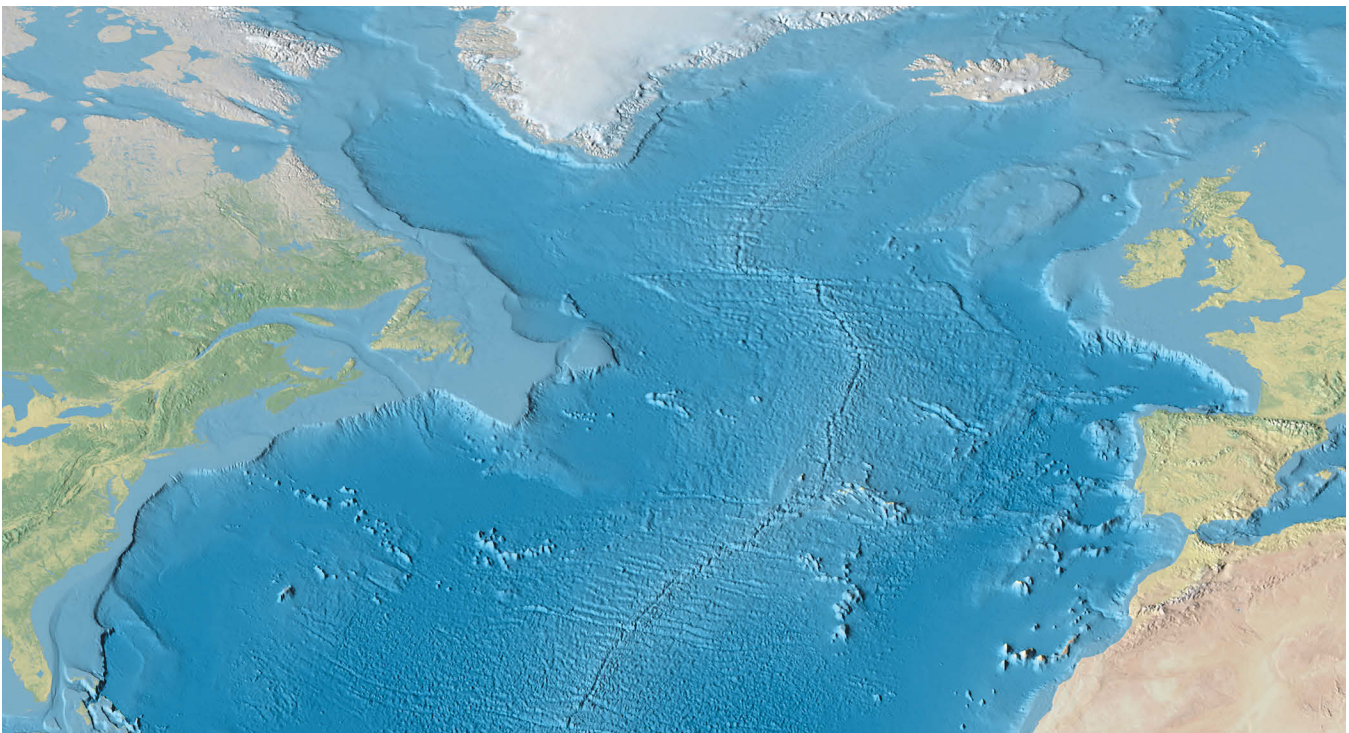


Figure 11. The North Atlantic rendered as a plan oblique relief. For a comparison with Heinrich Berann’s work, see Figure 3, right.