

Visual Fields

Atlas of Yellowstone – Preliminary Work

W. Andrew Marcus, Senior Editor

Department of Geography, University of Oregon

James E. Meacham, Cartographic Editor

InfoGraphics Lab, University of Oregon

Ann Rodman, Yellowstone Editor

Yellowstone National Park

Alethea Steingisser, Cartography and Research

InfoGraphics Lab, University of Oregon

The Atlas of Yellowstone represents a collaboration among the University of Oregon, Yellowstone National Park, and many researchers of the Greater Yellowstone Area (GYA) to produce the first comprehensive atlas of a national park for the first national park in the world.

The atlas will contain approximately 300 pages that describe and explain the human and natural setting of Yellowstone National Park

and the GYA. Topics such as wolf ecology and fire history will be depicted in thematic page pairs that provide maps, graphics, tables and text specific to the topic. Reference maps will depict topography, and other key natural and human features.

The overarching content goal of the Atlas of Yellowstone is to give readers an enriched understanding of and appreciation for Yellowstone’s natural and cultural landscapes. In order to accomplish this overarching goal, content within the Atlas of Yellowstone will focus on four interconnected themes.

Yellowstone is extraordinary. In the context of the Atlas of Yellowstone, this “sense of place” theme will emphasize how Yellowstone is extraordinary relative to other places. Maps, text and tables related to bison, for example, will identify the critical role of Yellowstone National Park in preserving this species and its genetic integrity.

Yellowstone is connected. Yellowstone does not exist in isolation. Story lines built around the “connections” theme will demonstrate the complex interactions of organisms and habitats within and outside Yellowstone. A range of topics such as wildlife migration, seismic activity, and the local economy will demonstrate how Yellowstone is situated in a broader spatial and environmental context.

Yellowstone is temporally dynamic. The environment of Yellowstone is constantly changing over a wide span of time scales ranging from geologic time to the almost instantaneous. For example, the “Fire History” and “1988 Fires” topic pages document changes

Yellowstone Fire History 1881-2003

Historic

- 1881-1917 (Military) 47,988 Acres
- 1918-1944 (NPS) 58,518 Acres

Fire Suppression

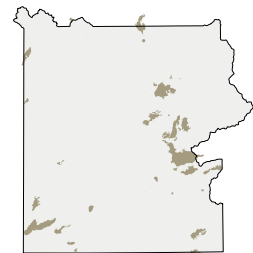
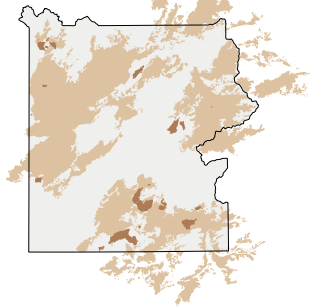
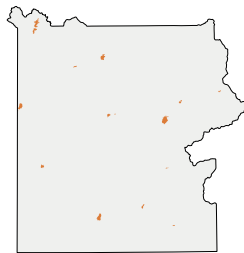
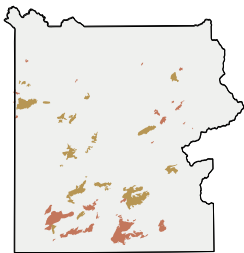
- 1945-1971 7,184 Acres

Natural Regulation

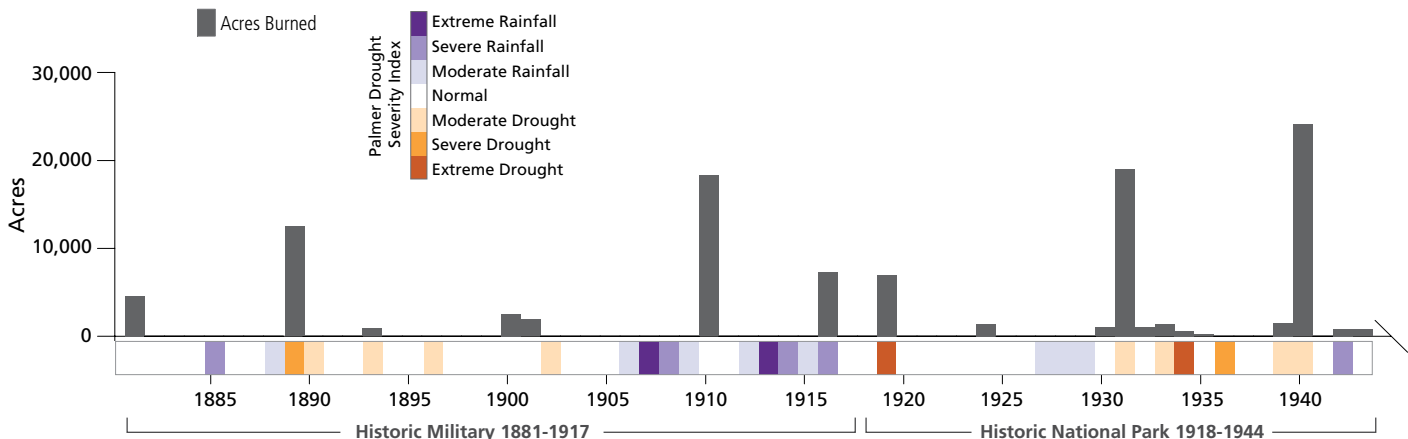
- 1972-1987 45,058 Acres
- 1988 1,110,009 Acres

Post 1988

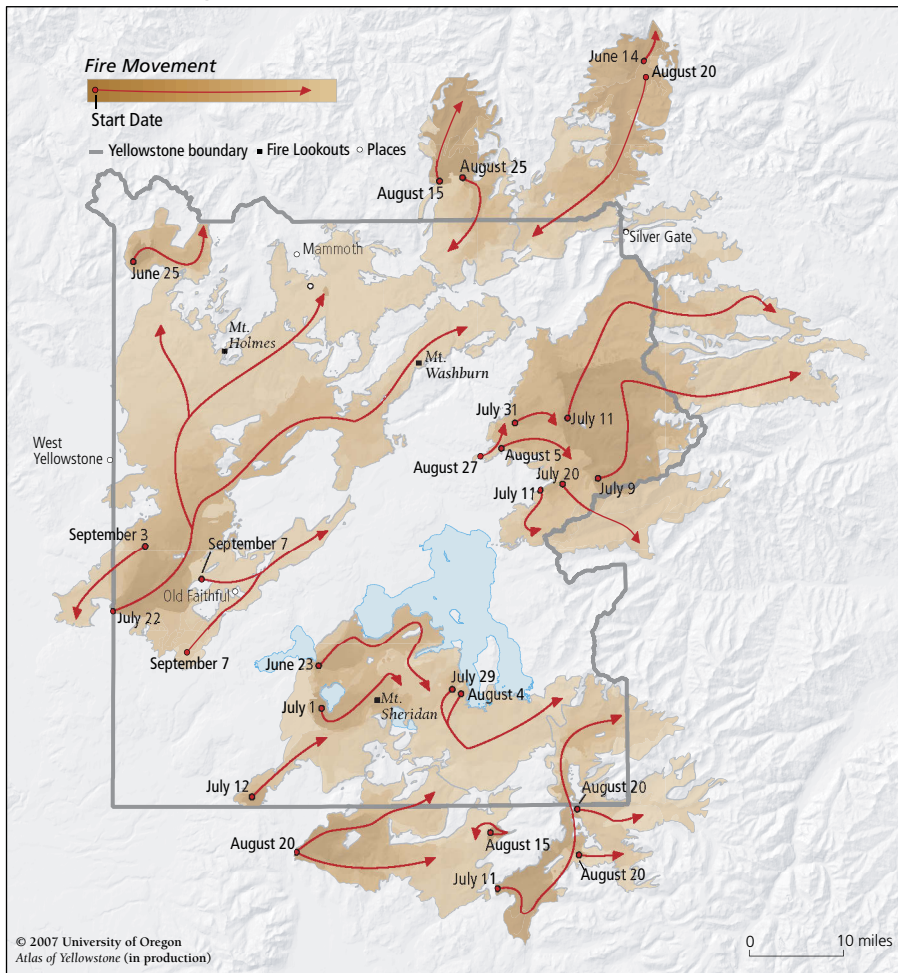
- 1989-2003 75,287 Acres



Acres Burned and Drought History in Yellowstone 1881-2003



1988 Fire Progression in Yellowstone



1988 fires
 1,110,009 acres burned
 (includes acreage burned outside Yellowstone boundary)

*not to scale

Suppression Management Implemented

in fire frequency and controls over long periods (from 12,000 years) to monthly and daily for the dramatic 1988 fire season. The maps and graph displayed here in "Visual Fields" are excerpts from the two "Fire" topic pages.

Humans are part of Yellowstone landscapes. Humans have interacted with Yellowstone and the surrounding region since prehistoric times. The "human imprint" theme will demonstrate the complex interplay of the human and natural processes in and around the region and will illustrate how human actions have altered these landscapes.

These four themes provide a general framework that helps editors, experts and cartographers develop story lines and cartographic layouts.

Acknowledgements:
 Don Despain, Roy Rankin, and Erik Strandhagen.

www.AtlasofYellowstone.com

